



## Main

Range of product	Zelio Relay
Product or component type	Socket
Contact terminal arrangement	Mixed
Product compatibility	Plug-in relay RPM (1 C/O)
Device short name	RPZ

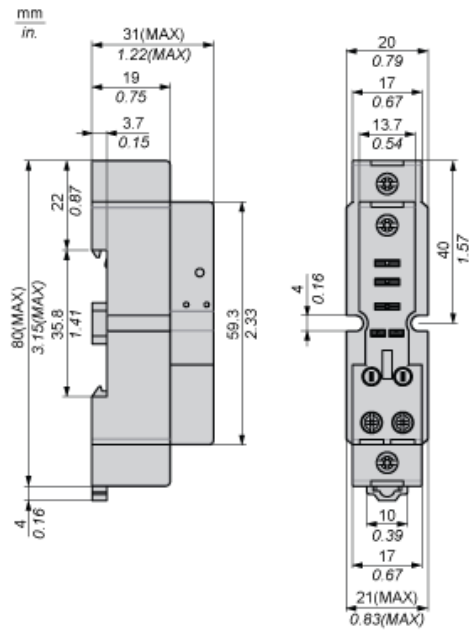
## Complementary

[I <sub>th</sub> ] conventional free air thermal current	16 A
[U <sub>e</sub> ] rated operational voltage	250 V
Tightening torque	<= 0.8 N.m (M3 screw(s)) <= 1 N.m (M3.5 screw(s))
Fixing mode	Clip-on mounting on 35 mm symmetrical DIN rail By screw mounting on panel
Product weight	0.031 kg

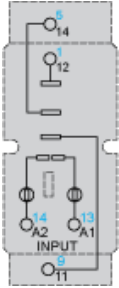
## Environment

Connections - terminals	Coil terminal - screw clamp terminals, 1 wire flexible cable with cable end 0.5...1.5 mm <sup>2</sup> / AWG 20...AWG 16 Coil terminal - screw clamp terminals, 2 wires flexible cable with cable end 0.5...1.5 mm <sup>2</sup> / AWG 20...AWG 16 Coil terminal - screw clamp terminals, 1 wire solid cable without cable end 0.5...2.5 mm <sup>2</sup> / AWG 20...AWG 14 Coil terminal - screw clamp terminals, 2 wires solid cable without cable end 0.5...2.5 mm <sup>2</sup> / AWG 20...AWG 14 Contact terminal - screw clamp terminals, 1 wire flexible cable with cable end 0.5...2.5 mm <sup>2</sup> / AWG 20...AWG 14 Contact terminal - screw clamp terminals, 2 wires flexible cable with cable end 0.5...2.5 mm <sup>2</sup> / AWG 20...AWG 14 Contact terminal - screw clamp terminals, 1 wire solid cable without cable end 0.5...4 mm <sup>2</sup> / AWG 20...AWG 12 Contact terminal - screw clamp terminals, 2 wires solid cable without cable end 0.5...4 mm <sup>2</sup> / AWG 20...AWG 12
Standards	IEC 61984 UL 508 CSA C22.2 No 14
Product certifications	CE CSA RoHS UL REACH EAC China RoHS
Ambient air temperature for storage	-40...85 °C
Ambient air temperature for operation	-40...55 °C
IP degree of protection	IP20 conforming to EN/IEC 60529
Dielectric strength	2500 V

Dimensions



## Wiring Diagram



Symbols shown in blue correspond to Nema marking.